

# M-100X

## Explosion Proof Adjustable Flow Switch with Right Angle Flow

### Key Features

- Field adjustable
- Infinite flow range
- Extremely accurate and sensitive
- Low pressure drop
- UL recognized for hazardous location
- ATEX certified for intrinsic safety and encapsulation and dust environments
- Community Europe compliant
- Universal Mounting available

### Description

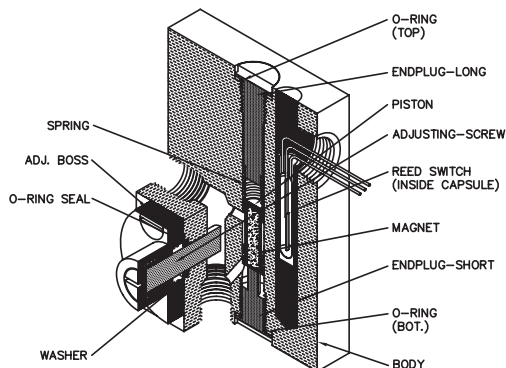
The M-100X Series is an extremely sensitive flow switch. It has been engineered to monitor vital sample flow parameters for instrumentation in process control and inert blanket gases. It is used as an auxiliary alarm monitor for flow meters and is ideally suited for applications when installed on a bypass for determination of filter plugging. Infinite adjustment permits detection and signaling of very low fluid flows with the added capability of detection in high flows.

### Operating Principle

When there is no flow the free magnetic piston rests on the bottom of the bore. Process changes in the flow, relative to the variable orifice adjustment initiates the movement of the piston which is restored to its original position when there is a loss of flow. The movement of the piston actuates a sensitive reed switch which can be positioned to indicate a normally open or closed circuit, depending on the specific requirement. A counter-clockwise adjustment of the adjusting screw allows more flow through the bypass, effectively rendering a less sensitive flow switch. A clockwise adjustment of the adjusting screw reduces the bypass flow, redirecting the flow path to the main bore for a more sensitive flow switch.

### Applications

- Gas and liquid analyzers
- Biomedical instruments
- Atmosphere furnaces
- Gas chromatographs
- Vacuum systems
- Industrial fluid lines



Illustrated is the M-100X model with 1/4" ports.

## Material Specifications

Housing	Hasteloy	316 SS
Endplug	Hasteloy	316 SS
Piston	Hasteloy	316 SS
Spring (only in universal mounting version)	Hasteloy	Stainless Steel
Adjustment Screw (wetted area)	PTFE	
O-rings	*	
Retaining ring	N/A	Stainless Steel (PH 15-7 MO, AMS 5520, AISI-632) (Passivated)

\* Please consult with the factory for any special requirements.

## Operating Specifications

Pressure & Temperature	Maximum Operating Pressure	1,500 psig	3,000 psig
	Burst Pressure	3,000 psig	5,000 psig
	Maximum Operating Temperature	150°C (302°F)	
Flow Calibration	Set Point Accuracy	± 10% maximum	
	Hysteresis	15%	
	Repeatability	± 1% maximum	

See “Design Consideration/Construction” section

## Calibration range

Flow Range	Flow Range Air (sccm)	Flow Range Water (ccm)	Port Sizes
0 - Low	20 - 10,000	1 - 200	1/8" FNPT
1 - Standard	50 - 40,000	3 - 650	1/8" FNPT
2 - High	200 - 60,000	5 - 950	1/4" FNPT

NOTE: The above mentioned ranges could vary if used with a spring for universal mounting. Please contact the factory for higher settings. Please consult with us for alternate port connections.

## Electrical Specifications

<b>Reed Switch data</b> (Electrical Ratings)	10 Watts SPST or 3 Watts SPDT (Hermetically Sealed) UL Recognized. File E47258
Operating temperature	-40°C to 150°C
Switch voltage	200 Vdc (170 Vdc for SPDT)
Breakdown voltage	250 Vdc (200 Vdc for SPDT)
DC Resistive	10 VA (3 VA for SPDT)
AC Resistive	10 Watts (3 Watts for SPDT)
Switching current	0.5 A (0.25 A for SPDT)
Carrying current	1.2 A (0.5 A for SPDT)
Lead Wires	No 24 to 18 AWG. 18" length, Polymeric UL Recognized (Belden cable or special shielded cable is available)
Lead Wires Color	SPST: 2 blue wires SPDT: Green - Common, Yellow - Normally Closed, Orange - Normally Open

## Reed Switch Ratings as Recognized by UL

<b>SPST</b>	120 Vac 24 Vdc 50 Vdc	0.1 A general purpose 0.25 A resistive 0.25 A resistive
<b>SPDT</b>	120 Vac 10 Vdc 24 Vdc	0.1 A general purpose 0.25 A resistive 0.1 A resistive

## Installation and Maintenance

The standard switch has to be mounted vertically in the position shown above (first page). Models suitable for universal mounting positions are available upon request. Adequate filtration and sealing procedures should be used when mounting in flow lines. For detailed directions, please refer to our "Installation and Maintenance" sheet.

## Design Considerations / Construction

The M-100X Series comprises a body, piston, and Retaining rings. Selecting a flowswitch begins with selecting the body; this series is available in 316 Stainless Steel or Hasteloy. The M-100X series contains one moving part (i.e. the piston) and two retaining rings that are in the fluid path. Construction of the piston is important from a design perspective. We manufacture three types of pistons (it is critical to select the correct piston for your application): 316 Stainless Steel, PTFE encapsulated, and Special All-Metal Piston.

1. The standard piston is a 316 Stainless Steel piston with epoxy to hold the magnet in place. This piston is recommended for non-aggressive fluids and inert gases. Stainless Steel retaining rings are typically used with this piston type.
2. The second piston that is available is PTFE Encapsulated. This piston is a magnet that has PTFE molded around it and is then machined to the appropriate configuration. These pistons are primarily used in applications when a customer prefers a piston that does not have epoxy in the fluid path; or a piston that is impervious to aggressive fluids and gases. This piston is highly recommended for medical applications. Hysteresis on these pistons tends to be slightly higher (10 to 15%) than a metal piston due to frictional effects, weight, and surface adhesion considerations. Fluid temperatures and fluid compatibility with PTFE must be taken into account prior to selecting this piston. Certain aggressive chemicals at specific temperatures cause the PTFE to swell thus causing the piston to change shape resulting in failure of the product. Stainless or PTFE retaining rings can be used with this piston.
3. The third piston that is available is a special all-metal piston with no epoxy (only available in 316SS). This piston is fabricated in a proprietary process with only one weld seam (leak tested) which presents an all 316SS surface to the fluid path. This piston is recommended for applications in which the piston can experience a lot of cycling wear. This piston has been tested to 250,000 cycles at 125 psi. Stainless Steel retaining rings are recommended for this piston type for low pressure applications. An orifice disc (See Universal Mounting Diagram) is recommended for high pressure (125 psi) applications.

## Adjustable Flow Setting Information

This model is an adjustable flow switch. The flow set point can be set at the factory, upon request. When purchasing a flow switch, use the “Flow Switch Application Sheet” or provide additional information on the purchase order to facilitate factory calibration of the set point.

- Calibration set point
- Increasing or decreasing flow
- Fluid type (i.e. liquid or gas)
- Density or specific gravity
- Viscosity
- System pressure and temperature
- Flow direction (i.e. upward or downward)
- Mounting orientation (i.e. horizontal or vertical)

## Custom Version Available

Malema welcomes the opportunity to apply its flow sensor experience to work for its customers. Please contact us for any special requirements including ports, extreme temperature capabilities, extreme pressure capabilities, etc.

## Certifications

- UL and Canadian UL Recognized for use in Class I (Groups A, B, C) and Class II (Groups E,F,G), all divisions, hazardous locations. File E153446.
- Atex Certifications for Encapsulation and Intrinsic Safety (Via ISSeP)
- IECEx Certifications for Encapsulation and Intrinsic Safety Protection (Via UL)

### Intrinsic Safety (Via ISSeP)

Gases:  II 1 G Ex ia IIC T6...T3 Ga

Dusts:  II 1 D Ex ia IIIC T95°C...T175°C Da

#### Electrical Parameters

$U_i \leq 30 \text{ V}$

$P_i \leq 0,7 \text{ W}$

$C_i = 40 \text{ pf}$

$L_i = 4 \text{ } \mu\text{H}$

### Encapsulation (Via ISSeP)

Gases:  II 2 G Ex mb IIC T6...T3 Gb

Dusts:  II 2 D Ex mb IIIC T95°C...T175°C Db

#### Electrical Parameters

$U_m = 250 \text{ V}$  and  $I_m = 1 \text{ A}$

Ambient temperature range	Temperature class for Gas	Temperature class for Dust
- 40 °C to + 60 °C	T6	T95°C
- 40 °C to + 75 °C	T5	T95°C
- 40 °C to + 117 °C	T3	T140°C
- 40°C to + 149 °C	T3	T175°C

#### -EX ia:

EN 60079-0 : 2012 (IEC 60079-0 : 2011)

EN 60079-11 : 2012 (IEC 60079-11 : 2011)

EN 60079-26 : 2007 (IEC 60079-26 : 2006)

#### -EX mb:

EN 60079-0 : 2012 (IEC 60079-0 : 2011)

EN 60079-18 : 2009 (IEC 60079-18 : 2009)

## CE Mark

### EMC (EMC directive 2004/108/EC)

EN 61326-1:2006

EN 61000-4-2:1995/A1:1998/A2:2001

EN 61000-4-3:2006

EN 61000-4-4:2004

EN 61000-4-6 :2007

EN 61000-4-8 :1994/A1:2001

### Safety (Low-voltage Directive 2006/95/EC)

EN 61010-1:2001

## IECEx

### Intrinsic safety

IECEx cert # : UL 13.0065X

Code : Ex ia IIC T6, Ex ia IIIC T80°C Da

### Encapsulation safety

IECEx cert # : IECEx UL 13.0067X

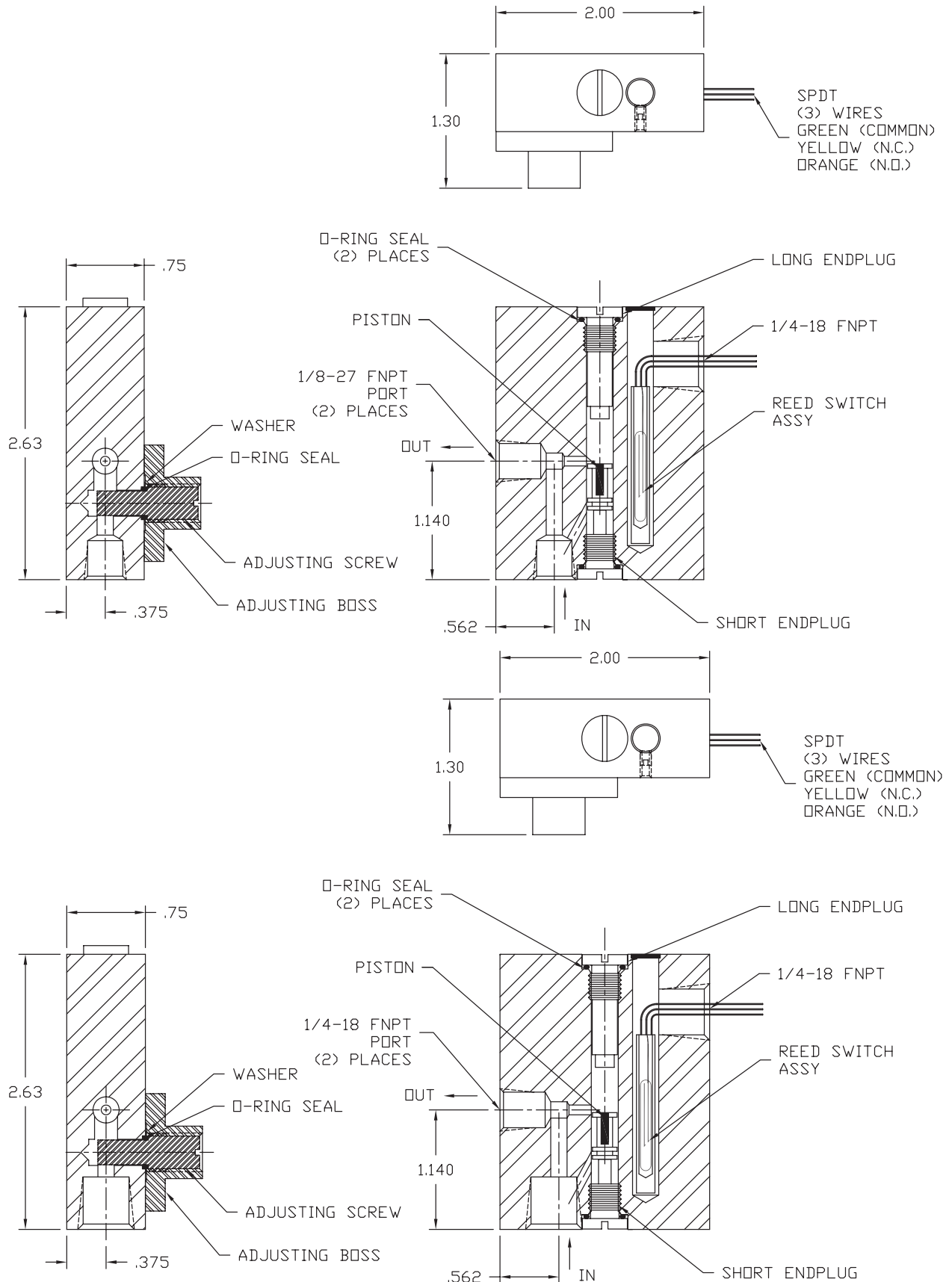
Code : Ex mb IIC T6 Gb, Ex mb IIIC T80°C Db

# M-100X

# Explosion-Proof Adjustable Flow Switch

## Cut Dimensional Drawings

Illustrated are the M-100X model with 1/8" ports and SPDT switch (above) and the M-100X model with 1/4" ports and SPDT switch (below). For Reference Only



## Ordering Information

Model Ordering Code											Option		
M-100X	-	*	*	*	*	-	*	*	*	-			***
	-												
Material		H										Hasteloy	
		S										316SS	
Fluid Connection		1										1/8" FNPT	
		2										1/4" FNPT	
Switch		1										SPST N.O.	
		2										SPST N.C.	
		3										SPDT	
Flow Range		0										Low (needle valve body)	
		1										Standard	
		2										High	
						-							
Mounting						0					Standard (Vertical)		
						1					Universal Mounting (with disc and spring)		
Piston						0					316SS with epoxy		
						1					PTFE encapsulated		
						2					All-316SS (no epoxy)		
Seals						0					Standard (Viton)		
						1					Kalrez		
						6					Butyl		
						7					Buna-N (Nitrile)		
								-	XXX	Unique PN Identifier			

© 2014 Malema Engineering Corporation. All rights reserved.

Malema, Malema Sensors, and Malema Engineering Corporation are service marks of Malema Engineering Corporation. All other trademarks are property of their respective owners.

Malema supplies this publication for informational purposes only. While every effort has been made to ensure accuracy, this publication is not intended to make performance claims or process recommendations. Malema does not warrant, guarantee, or assume any legal liability for the accuracy, completeness, timeliness, reliability, or usefulness of any information, product, or process described herein. We reserve the right to modify or improve the designs or specifications of our products at any time without notice. For actual product information and recommendations, please contact your local Malema representative.

## Corporate Headquarters

1060 S Rogers Circle

Boca Raton, FL 33487

P: (561) 995-0595 F: (561) 995-0622

## West Coast Headquarters

2329 Zanker Road

San Jose, CA 95131

P: (408) 970-3419 F: (408) 970-3426

## Asia Pacific Headquarters

29 Woodlands Industrial Park E1 #02-06 Northtech Lobby 1

Singapore 757716

P: (65) 6482-3533 F: (65) 6484-4231