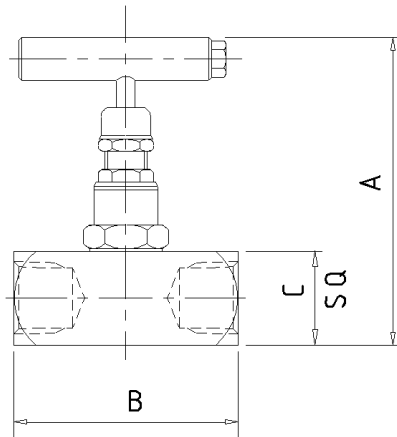


Product Data Sheet	F Type Needle Valve
---------------------------	----------------------------



The 'F' Type Single Isolating Needle Valve is designed for safe and reliable isolation giving bubble tight shut off, non-rotating & anti-galling tip and dynamic self-adjusting spindle seal to give long service life in a variety of applications.

Part No.	Connections Size	A	B	C	Weight (Kgs)
F25	1/4"	3.6	2.1	1.1	0.5
F38	3/8"	3.6	2.4	1.1	0.5
F50	1/2"	3.6	2.6	1.1	0.5
F75	3/4"	3.6	2.9	1.5	0.8
F10	1"	3.6	3.2	2.0	1.4

Key Features of the Oliver Needle Valve range

- Non rotating tip - self centering & anti-galling
- Piston ring - gives dynamic adjustment of gland seal in response to pressure change
- Anti-blow out spindle - a major safety feature
- Secure seal - precision machined to give leak free operation for the life of the valve. Available in either PTFE or Grafoil

Standard Specification

Pressure: 6000psi	Packing: PTFE	Handle: T-Bar	Bore: 0.21" (5.4mm)
Temp: 240 deg C	Thread form: NPT	Seat: Metal to metal	CV: 0.46

Ordering Code

(Typical example) →	F		50		S	/	BT	/	AT														
Type	Female x Female																						
Size	25 - 1/4" 75 - 3/4" 38 - 3/8" 10 - 1" 50 - 1/2"																						
Material	S - 316S31 Stainless Steel C - 230M07 Carbon Steel M - Monel (400) HC - Hastalloy (C276) (Others available)																						
Optional Connections (NPT Standard)	BT - BSP Taper BP - BSP Parallel (top sealing) SW - Socket Weld																						
Options	<table style="width: 100%; border: none;"> <tr> <td style="width: 50%;">AG - Grafoil</td> <td style="width: 50%;">LT200 - Cryogenic Head Unit (-200°C)</td> </tr> <tr> <td>AT - Anti-Tamper</td> <td>MT - Metering Tip</td> </tr> <tr> <td>HL - Handle Locking</td> <td>MTG - Mounting Holes x 2</td> </tr> <tr> <td>HL PI - Handle Locking + Position Indicator</td> <td>NA - NACE MR-01-75 (latest revision)</td> </tr> <tr> <td>HP - 10000 psi</td> <td>OXY - Oxygen Cleaned</td> </tr> <tr> <td>HW - Hand Wheel</td> <td>PK - PEEK Soft Tip (not available oxygen cleaned)</td> </tr> <tr> <td>LT100 - Cryogenic Head Unit (-100°C)</td> <td>PM - Panel Mount</td> </tr> </table>									AG - Grafoil	LT200 - Cryogenic Head Unit (-200°C)	AT - Anti-Tamper	MT - Metering Tip	HL - Handle Locking	MTG - Mounting Holes x 2	HL PI - Handle Locking + Position Indicator	NA - NACE MR-01-75 (latest revision)	HP - 10000 psi	OXY - Oxygen Cleaned	HW - Hand Wheel	PK - PEEK Soft Tip (not available oxygen cleaned)	LT100 - Cryogenic Head Unit (-100°C)	PM - Panel Mount
AG - Grafoil	LT200 - Cryogenic Head Unit (-200°C)																						
AT - Anti-Tamper	MT - Metering Tip																						
HL - Handle Locking	MTG - Mounting Holes x 2																						
HL PI - Handle Locking + Position Indicator	NA - NACE MR-01-75 (latest revision)																						
HP - 10000 psi	OXY - Oxygen Cleaned																						
HW - Hand Wheel	PK - PEEK Soft Tip (not available oxygen cleaned)																						
LT100 - Cryogenic Head Unit (-100°C)	PM - Panel Mount																						